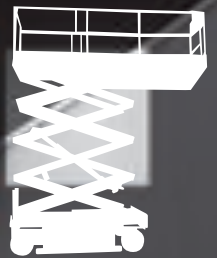


SCISSOR LIFTS

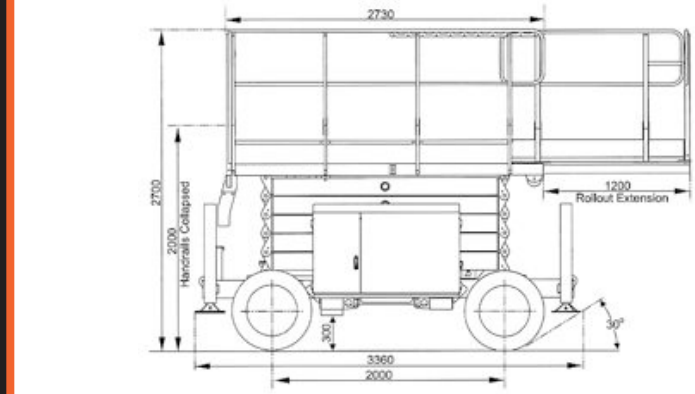
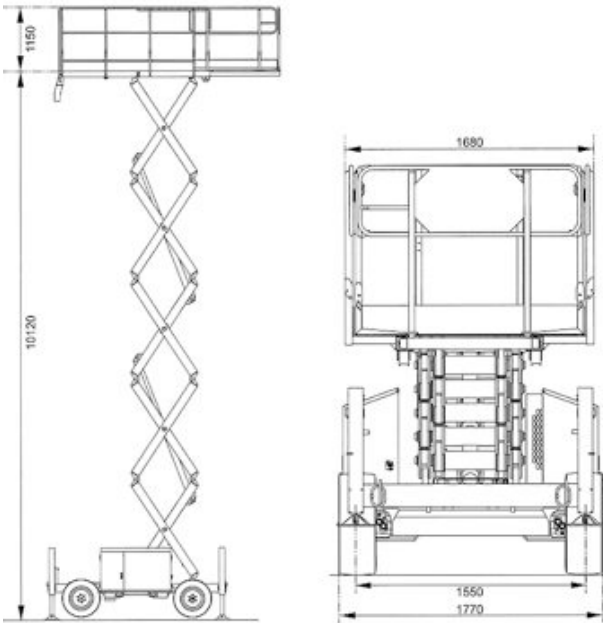
SNORKEL SR3370

Snorkel

ELEVATING WORK PLATFORMS



SNORKEL SR3370



STANDARD FEATURES

- Proportional speed control
- 35% gradeability
- Large 1200mm multi-position extension deck
- Easy access to hydraulic & electric components
- Reliable diesel engine
- Lockable hinged covers
- Lifting lugs / tie down rings
- Ground controls with temperature gauge, ammeter & hourmeter
- Independently operated hydraulic outriggers with auto level

- Large tyres with 350mm ground clearance
- Forklift pockets
- Independent oscillating axles

ADDITIONAL OPTIONS

- No stabilisers
- 110/240VAC GFCI power to platform
- Flashing light
- Alternative power options of gasoline or LPG
- Non-marking tyres

Danger: Models described in this brochure are NON-INSULATED and do not provide electrocution protection from contact with or close proximity to energised conductors which is pointed out on decals and placards attached to the machine. Only qualified and trained operators are to be authorised to use and operate a work platform. Aerial work platforms must be elevated only on firm, level surface.

Products in this brochure comply with relevant ANSI and Australian Standards. This literature is for illustrative purposes only. Consult Operating/Maintenance and Parts Manuals for proper procedures. Specifications may vary and are subject to change without notice.

SPECIFICATIONS

PLATFORM

Working Height	39'9"	12.12m
Height (on stabilisers)	33'2"	10.12m
Lift Capacity	990lbs	450kg
Size	8'11" x 5'5"	2.73 x 1.65m
Roll Out Deck	48"	1200mm
Guard Rail Height	43.3"	1.10m
Toe Board Height	6"	150mm

MACHINE DIMENSIONS

Stowed Height	8'10"	2.7m
Stowed Height (hand rails folded down)	6'6"	2.0m
Overall Width	5'9"	1.77m
Overall Length	11'	3.36m
Wheelbase	6'6"	2m
Turning Radius		
Inside	7'8"	2.38m
Outside	15'6"	4.75m
Gradeability	35%	
Max. Wind Speed (12.5m/s)	28mph	45km/h
Platform Lift Speed	50sec	
Power Source	Diesel Engine	
Ground Clearance	15.7"	300mm
Exit/Entry Angle	19 degrees	35%
Tyre Size & Type	27" x 10.5" x 15"	Poly filled loader lug
Weight	7964lbs	3620kg
Axle	Articulating	

DRIVE SPEED

Below 2.4m	0 - 4.3mph	0 - 7.0km/h
Above 2.4m	0 - 0.5mph	0 - .8km/h

Snorkel
ELEVATING WORK PLATFORMS
DEALER STICKER

AUSTRALIA

2/26 Redfern Street
Wetherill Park, NSW 2164
Phone +61 2 9725 4000
Fax +61 2 9609 3057

NEW ZEALAND

36 Bruce Road
Levin, New Zealand
Phone +64 6 3689 168
Fax +64 6 3689 164

USA

2009 Roseport Road
Elwood, KS 66024
Phone 785 989 3000
Fax 785 989 3070